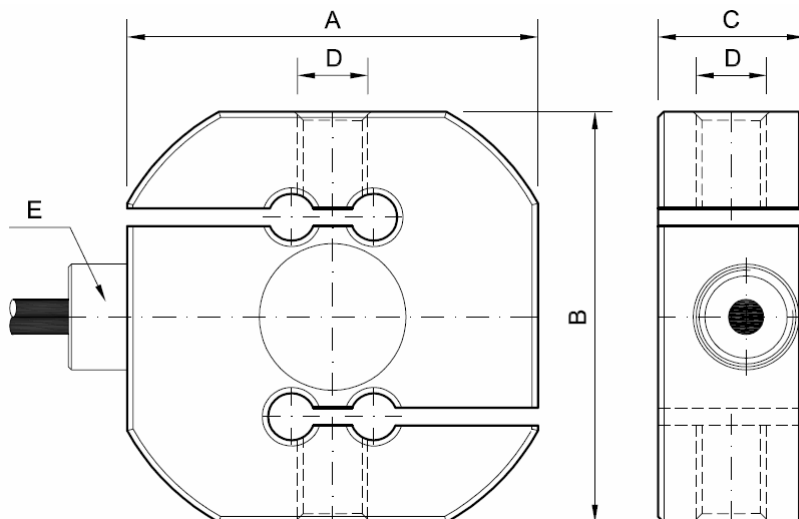


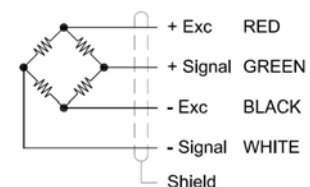
nL (kg)	A	B	C	D	E
15					
25	60	60	20	M-10	-
50					
75					
100					
150	70	70	25	M-12	PG-9
200					
250					
300					
500					
750					
1000					
1500	80	80	25	M-16	PG-9
2000					
2500					
3000	94	89	42	M-22x2.5	PG-9
5000					

Load cells specially designed to work in traction and compression



Dimensions in mm.

Wiring diagram



Technical Characteristics

Nominal load (nL)	15 5000 kg.	Minimum insulation resistance (V.Test = 100V)	4 GΩ
Sensibility	2,0 (mV/V) ± 0,1 %	Input impedance	380Ω ± 10 Ω
Zero balance	1,5 % F.S.	Output impedance	350Ω ± 1,5 Ω
Maximum excitation voltage	12V.	Load limit without loss of characteristics	150 % F.S.
Hysteresis error	0,023 % F.S.	Minimum breaking load	250% F.S.
Creep (over 30 minutes)	0,019 % F.S.	Protection class	IP 67
Maximum linearity error	0,021 % F.S.	Cable type	4x0,22 mm ² Ø6
Compensated temperature range	-10 ... 40 °C	Cable length	4 m.
Service temperature range	-20 ... 60 °C	Material	15 75 Kg. Aluminum
Storage temperature range	-20 ... 70 °C		75 5000 Kg. Alloy steel
Temperature effect on sensitivity	0,026 % F.S.	Surface treatment	15 75 Kg. Natural
Temperature effect on zero	0,015 % / 5°C		75 5000 Kg. Chemical nickel